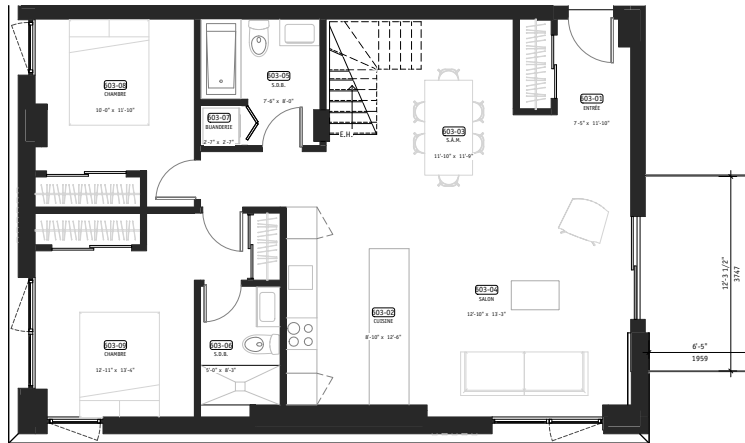
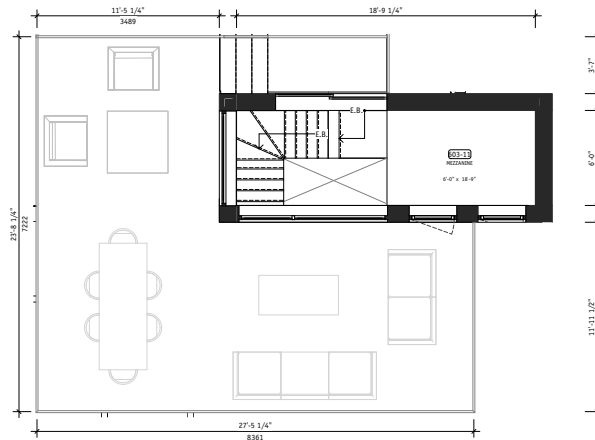




QV MONTREAL
CONDOMINIUMS



1 PLAN 603 - 6E ÉTAGE
A180 3/4" = 1'-0"



SUITE	CHAMBRE(S)	SUPERFICIE BRUTE
603	2	1219 pi²
Entrée: 7' 5" X 11' 10" Cuisine: 8' 10" X 12' 6" Salle à manger: 11' 10" X 11' 9" Salon: 12' 10" X 13' 3" Salle de bain: 7' 6" X 8' 0"		Salle de bain: 5' 0" X 8' 3" Chambre: 10' 0" X 11' 10" Chambre: 12' 11" X 13' 4" Buanderie: 2' 7" X 2' 7" Mezzanine: 6' 0" X 18' 9"

